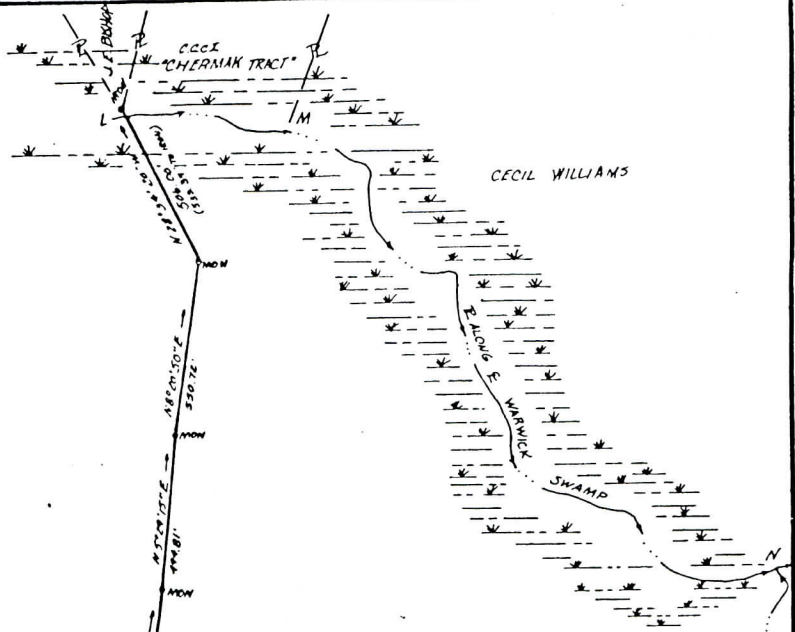
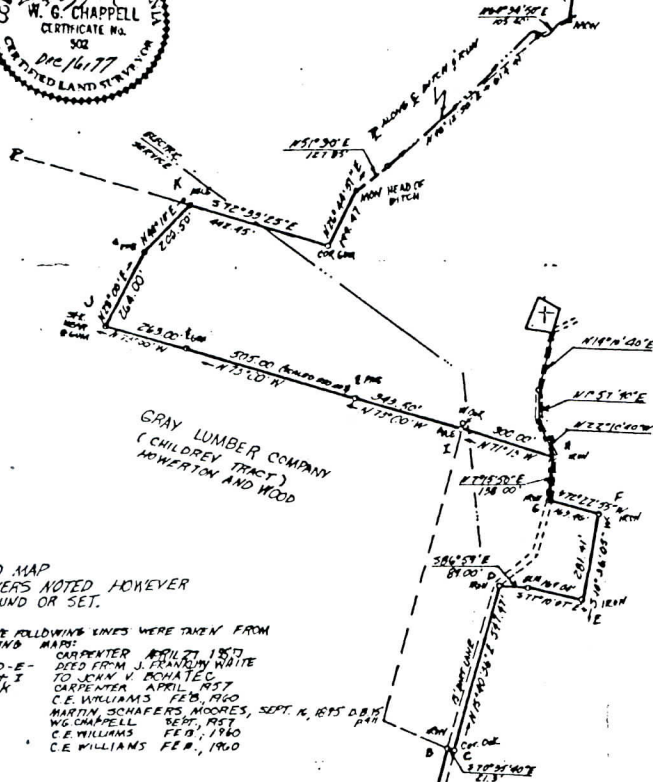




PURNELL GRANT



199 ± Acres



COMPILED MAP
ALL CORNERS NOTED HOWEVER
WERE FOUND OR SET.

NOTE: THE FOLLOWING LINES WERE TAKEN FROM
THE FOLLOWING MAPS:
LINE A-B-C-D-E- CARPENTER APRIL 1857
LINE B-C-D-E- DEED FROM J. FRANKLIN WHITE
P-G-H-I TO JOHN V. BOHATEC
LINE J-K-L CARPENTER APRIL 1857
LINE L-M-N C.E. WILLIAMS FEB. 1900
LINE M-N-O MARTIN SCHAFERS, MOORES, SEPT. 18, 1855 D.B. 15
LINE N-O W.G. CHAPPELL SEPT. 1857
LINE O-P C.E. WILLIAMS FEB. 1940
LINE P-Q C.E. WILLIAMS FEB. 1940

AREA:
199 ± Acres

AREA BY PLANIMETER
AREA COMPUTED TO AND ALONG CENTER
LINE OF ALL ROADS AND STREAMS.

MAP
SHOWING A TRACT OF LAND
SITUATED NEWVILLE DISTRICT
SUSSEX COUNTY, VIRGINIA
LOCALLY KNOWN AS
J. F. WHITE "TATUM TRACT"
OWNED BY AND SURVEYED FOR
GRAYLAND COMPANY
SCALE: 1" = 300'
DECEMBER, 1977

1GL.#810

Surveyed and Platted by W. G. Chappell, Surveyor, Sussex County, Virginia, 1977