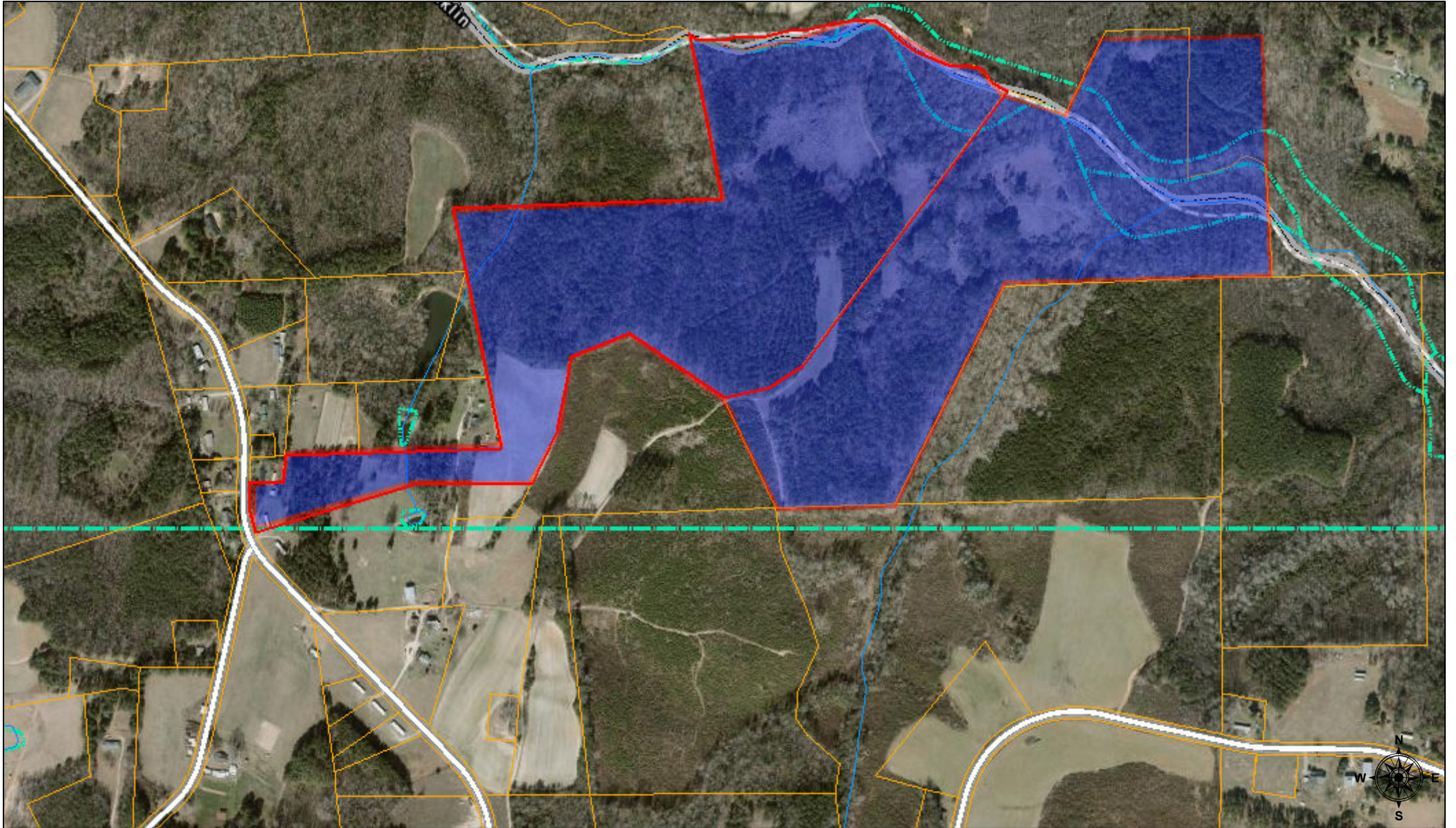
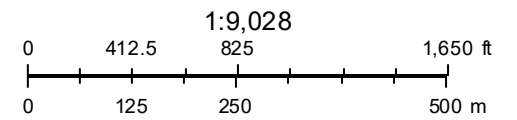


CHARLES H. FAULKNER TRACTS



February 6, 2021



Source: Esri, Maxar, GeoEye, Earthstar Geographics, CNES/Airbus DS, USDA, USGS, AeroGRID, IGN, and the GIS User Community
Esri, HERE, Garmin, (c) OpenStreetMap contributors, and the GIS user community